

SL18 - SL28 - SL58

SOFT MEDIA BLASTING MACHINES

- A range of non-aggressive blasting machines for the renovation of monuments and the cleaning of delicate surfaces.

SL18



SL28



SL58



Adjustable pressure from 0,5 to 7 bar

SODA BLASTING
WET BLASTING

	SL18	SL28	SL58
Length	960 mm	965 mm	1 220 mm
Width	410 mm	430 mm	770 mm
Height	820 mm	890 mm	1 200 mm
Weight	85 kg	95 kg	165 kg
Abrasive capacity	18 litres	24 litres	50 litres
Length of sandblasting hose	10 meters	10 meters	20 meters
Air consumption	from 500 l/min	from 800 l/min	from 1 500 l/min

A range of 100 % pneumatic easy to use, effective and operational soft blasting devices

A SUPERFICIAL ABRASION

A fine adjustment of the projection impact allows an adaptation to the surfaces to be treated: the purpose is a very superficial abrasion in order not to damage the surface during cleaning process.

The media is pressurised in a pot with a capacity between 18 and 50 litres. It is then fed through a hose towards the blasting nozzle.

This nozzle will determine air and media consumption, requested compressor capacity, efficiency and cleaning accuracy.

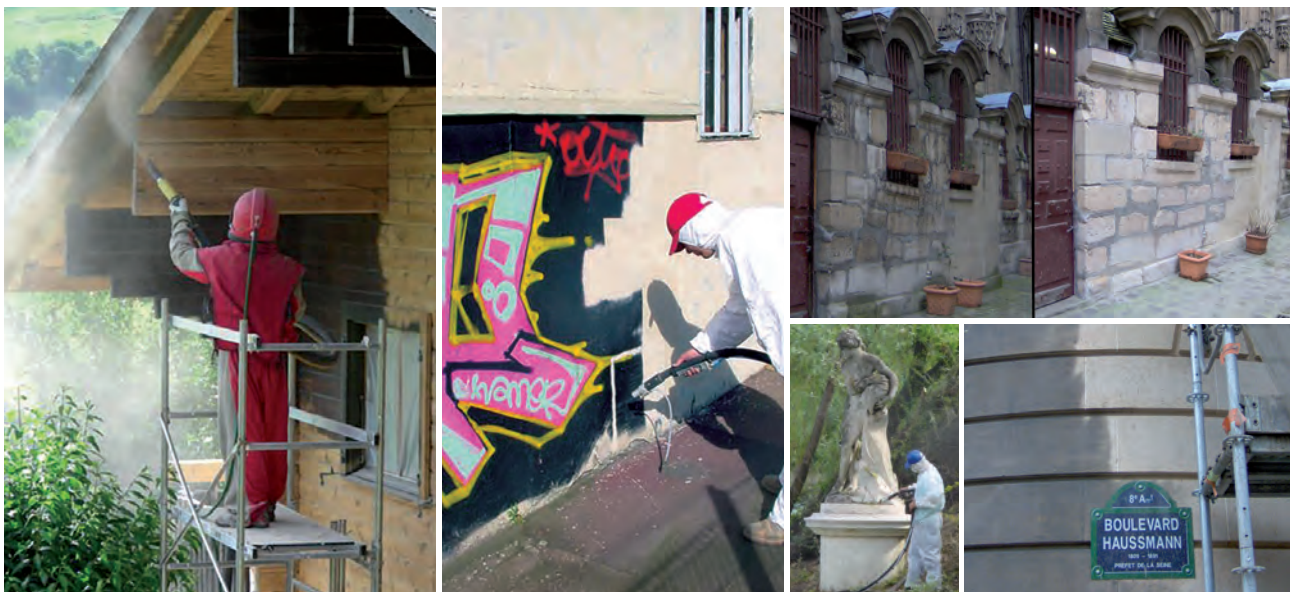
It is possible to obtain an even less abrasive sandblasting by means of a water mist directly coming from the water network.



VARIOUS APPLICATIONS

The various adjustments (media flow, dry or wet blasting) allow adaptation to the surfaces to clean (stone, stucco, concrete, brick, PVC...) enabling the achievement of the expected results.

The ACF soft blasting devices have excelled in the cleaning of a lot of famous monuments such as the Panthéon and Prefecture in Paris, the Capitole in Toulouse, the Rodez Cathedral, Versailles, etc...



AN INTEGRATED AIR COOLER

The SL precision soft blasters are delivered with an integrated air cooler. The compressed air is purified by way of pneumatic cooling up to 9° below room temperature.

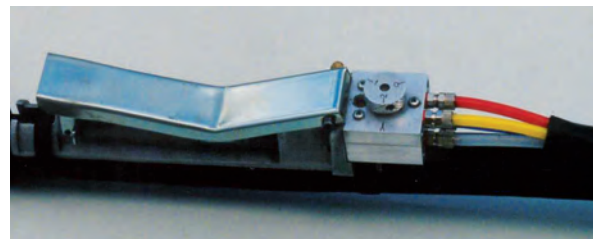
SL18 and SL28 models are equipped with a 2000 l/min air cooler. The air cooler for SL58 is more efficient with 4000 l/min.



- Lubrication by filter-regulator oiler (only for SL58)
- Radiator protection mesh 5,5
- Adjustable motor speed
- Control gauge

INTEGRATED REMOTE CONTROL

The remote control of **SL28** and **SL58** offers a blower + rinsing function which is ideal for finishing work.



THE ADVANTAGES OF THE ACF SYSTEM

Keeps a clean environment

- **No use of chemicals and low water consumption** (no mud or dust)
The worksite remains environment friendly

A controlled budget

- **The operator may use the media of his choice**, including the cheapest one
- **Low media consumption**
- **A range of machines to choose from according to the surface that needs to be cleaned**

Easy to use

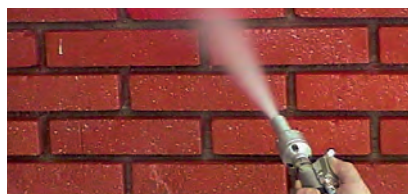
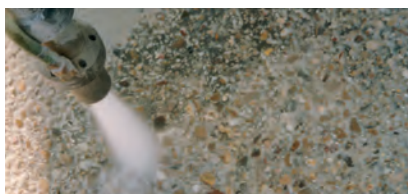
- **Performing** starting and stopping of the machine with remote control system allows the operator besides a quick response time to avoid down times, jams and an excessive media consumption
- **Quick intervention in case of media change thanks to a fast emptying valve system**

Comfortable

- **Easy handling**
- The operator may choose his **protective equipment**

WET BLASTING SOLUTION

The water mist generated by the **TURB'EAU nozzle** reduces the impact of media on the surface to be cleaned. It makes abrasion more superficial and offers the operator a better visibility while removing dust release.



Can be connected directly to the water mains

Your nearest Dealer:



LE SPÉCIALISTE

B.P. 23 - 69380 LOZANNE - FRANCE

Tél. : +33 (0)4 78 43 62 62

Fax : +33 (0)44 78 43 69 28

E-mail : acf@acf-france.com

www.acf-france.com